

OXFORD

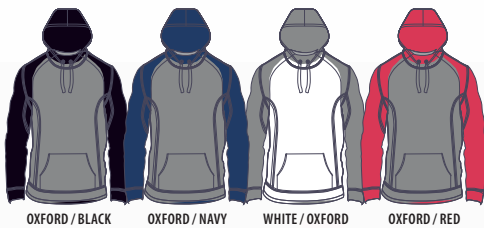
## Dri-Power® Fleece Full Zip Hoody

- 50/50 Cotton / Polyester
- Oxford: 52% Polyester / 48% Cotton
- Dri-power® moisture wicking fabric
- 2-ply hood with grommets
- Contrast jersey shoulder tape
- Full front zipper
- Self material front and back side inserts
- Set-in sleeves
- Rib knit cuff and waistband
- Cover seamed neck, armholes and waistband
- "R" Logo at waistband



**697M** Adult Sizes S-3XL

# RUGGED



## Dri-Power® Fleece Colourblock Hood

- Colours: 50% Cotton / 50% Polyester / HB Cloth
- Oxford: 52% Polyester / 48% Cotton / HB Cloth
- Black Heather: 50% Cotton / 50% Polyester / HB Cloth
- Dri-Power® moisture wicking fabric
- Three piece 2-ply hood with knit drawcord
- Oxford jersey back neck tape
- Raglan sleeves with two-needle coverstitch
- 1 x 1 ribbed cuffs and waistband
- Front muff pocket
- "R" logo flagtag on wearer's left hem

**693M** Sizes S-3XL



OXFORD / BLACK